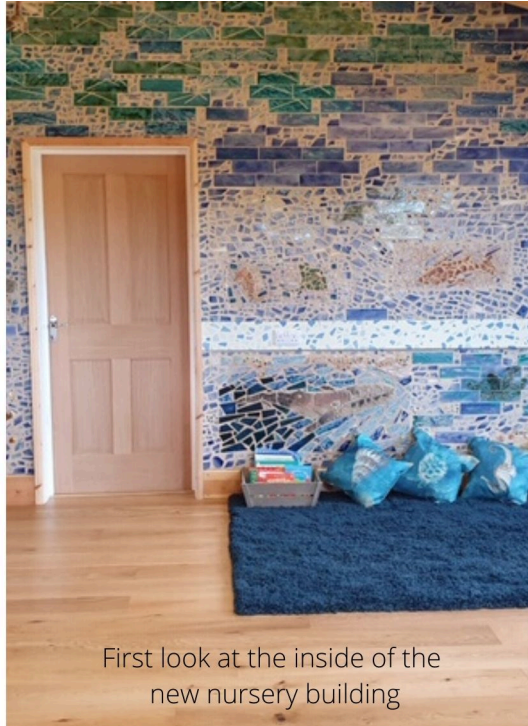


# Bellingdon & Asheridge Community Newsletter



VE Day Decorations



First look at the inside of the new nursery building

## IN THIS ISSUE

### Diary dates

#### Community news

BAACA AGM Notice  
Friday night football  
VH playground  
GB Spring Clean  
The Bull and Nursery  
Tin Tabernacle  
Lockdown plant sale

#### Parish Council News

#### A new chapter for Chesham

Well its been a different few months, to say the least! Shortly after the last newsletter the country went into lockdown to stop the spread of COVID-19 and many people's lives totally changed overnight.

In our rural area, those with animals to keep and fields to farm may not have noticed too much difference (other than increased numbers of cyclists and walkers), but for others lockdown meant almost total isolation.

Thankfully the community sprang into action and quickly organised a rota of volunteers to pick up shopping and medication for those who were not able to leave the house: our thanks to Don Baker for coordinating and to the many people who volunteered to help. In the end we didn't need everyone who offered: what a neighbourly bunch we all are.

Lockdown also meant the cancellation of our village pub night so an enterprising regular

set up a well attended pub quiz via Zoom (thanks Peter!) which was repeated for a few weeks until Zoom fatigue kicked in.

Even more ambitious was the Virtual Race Night on 1st May. Huge thanks to Gary Woodley for organising and running this. It raised £160 for NHS Charities!

There's been a noticeable increase in walkers and cyclists around our lovely villages enjoying the peace and quiet, seeing nature at its very best and for some, perhaps,

## JUNE (ALL CANCELLED)

**5th:** Friday night football  
**13th:** Rumble Fest  
**27th:** Fete  
**28th:** Dalmatian Fun Day

## JULY

**23rd:** AGM (may be virtual, please see [www.bellingdon.com](http://www.bellingdon.com) nearer the time for more details)

## AUGUST

**15/16th** VJ Day and postponed VE Day celebrations  
**27th-31st:** Forro Fest (tbc)

fully appreciating their surroundings in a way that our busy lives don't often allow. We would encourage everyone to adhere to the countryside code - particularly with reference to keeping dogs under control, leaving gates as you find them and not cycling on footpaths.

Also its been good to see the recreation ground at the hall being used for daily exercise - including some very intense training sessions by several very committed athletes!

Unfortunately someone has seen fit to ignore the newly-installed CCTV cameras at the hall and has sprayed graffiti over the pavillion at the far end of the field, not once but twice! This has been reported to the police.

The weekly "clap for carers" has now ended but a good amount of clapping and banging of saucepans could be heard every Thursday night in support of NHS doctors and nurses - plus all the lovely rainbows drawn, coloured or painted by our

amazingly resilient younger residents. There's even a front lawn with a rainbow and "NHS" etched into it.

While the official VE Day celebrations were postponed until mid August it was fantastic to see so many flags and bunting go up anyway, an amazing spitfire flyover, and some managed to have a socially distanced toast to those who gave their freedom so we can have ours.

*Helen Valvona, Editor*

BELLINGDON AND ASHERIDGE  
COMMUNITY ASSOCIATION  
Charity No 1087494

### **Notice of Annual General Meeting**

at The Village Hall or Online, TBC  
Thursday 23rd July 2020 at 8 pm

At the meeting the committee will present their Report & Accounts for the year ended 31st March 2020.

The current committee will resign and a new committee will be voted in.

An opportunity to discuss your views on the future of the village hall and recreation grounds.

All adult residents of Bellingdon & Asheridge may vote at the meeting.

If you would like any particular topic to be addressed at the meeting, please contact the Secretary, Helen Harding, in advance on [contact@bellinadon.com](mailto:contact@bellinadon.com)

## **Community news**

### **Friday night football**

We were hoping to start up Friday night football for U14s again after May half term, but unfortunately we can't now do this. Hopefully it'll be able to restart later in the year.

### **Village hall playground**

The playground is currently closed as per government guidelines. We will update the signage as and when the guidelines change and the playground has been checked for any potential hazards that might have occurred during lockdown.

### **Great British Spring Clean**

The #gbspringclean has been rescheduled to 11-27 September 2020 because of the COVID-19 lockdown. Please contact Don Baker nearer the time (we'll also provide more information in the Autumn Newsletter/ on the website).

In the meantime, why not pick up a bag of litter while you're out walking anyway? Don't forget your gloves and be sure to practice appropriate hand hygiene - or use a grabber if you have one.

## The Village Nursery



I recently had the pleasure of a (socially distanced) guided tour around the new Village Nursery that is finally able to open its doors to children from the beginning of June, and what an amazing place it is!

Enough has been said about the sustainability of the construction but I should mention the extreme quality of the workmanship and the thought that has gone into every little detail to make it a place of wonder and stimulation for young minds.

The exterior, too, will eventually add much to the experience, blending in both with this unique building and its natural surroundings, offering 'living' outdoor play areas, raised beds for vegetable growing and even fruit trees to encourage a connection with nature that few nurseries are able to offer.

Now for phase two of the development - the refurbishment and extension to bring the old pub back to life. Watch this space!

*Andrew Barratt*

[More photos on [www.bellingdon.com](http://www.bellingdon.com) - Ed]

## The Tin Tabernacle in Turbulent Times

The Tin Tabernacle Church in Bellingdon has grown over the last 120 years to become an important part of village life. But now in the strange times of 2020 the building stands unused (though not unloved) and we share worship on YouTube.

We all know it's not the same as meeting together, but it does allow us to continue to be a community and to be a Christian presence in the village. And we can share pictures of the church in times past (and occasionally present) to remind us of the past and the future.

Some of the pictures remind us that in June or July there would be a flower festival or exhibition in the church. Whilst it is not possible to hold such an event, we are planning a taster of what we hope will be allowed later in the year.

To do this we're asking those who would have arranged flowers in church to arrange flowers at home and take a picture of them. We'll put these together as a video and upload it to YouTube for all to see alongside our service on 5th July 2020.

We're very grateful to all who contribute to our services, to those from the parish who help with talks, and for the links to them on the village website. But we do look forward to the time when we can give the mice notice to quit and set about getting back into the Tin Tabernacle.

*Tim Yates, Minister for St John's Bellingdon*

## Hort Soc - lockdown plant sale

Committee members had started growing from both plugs and seed before the lockdown started so had expended a fair amount of time and effort in the growing.

We decided, therefore, to circulate a list of plants via email to members that we had emails for, with instructions to pay either by direct transfer or cheque/cash through my door. We took over £160 after our costs, so not bad at all.





Social distancing was observed of course when delivering plants and the various growers delivered their own to minimise committee members' contact too, so a good effort by all concerned.

Huge thanks to our members for your continued support in these difficult times.

*Tracey Ryan*

## Parish Council News

The Parish Council held its first online meeting on 13th May.

Our new website is now up and running we would welcome feedback <https://chartridgeparishcouncil.org.uk>

The next meeting will be held on 24 June at 8pm and is likely to be online.

*Tim Corvin*

## A new chapter for Chesham

A new community bookshop, Chapter Two, is opening in Chesham, with all profits going to support The Hospice of St Francis which helps local people affected by cancer or a life-limiting illness.

The bookshop, at 10 High street, has sustainability at its heart, giving new life to once-cherished books and re-using materials inside the shop from donated bookcases to reading tables and chairs. Visitors are encouraged to pop in and browse the books from the ever-changing collection whilst enjoying a coffee. They can also take inspiration from the curated gift collection of stationery, cards, vinyl records or bespoke items created by the Hospice's *Creates & Makes* volunteer team.

With a dedicated children's area and plans for workshops from book binding to book origami and novel writing to reading groups, it will be a community space for all plus offer the chance to find out more about the work of the Hospice (which has cared for people from Chesham for over 40 years) with 'Meet the nurse' events and other information events planned.

Chapter Two will be open seven days a week.

Donations of good quality books during opening hours are always welcome. Find out more about Chapter Two, The Hospice of St Francis and its free services at [www.stfrancis.org.uk/chaptertwo](http://www.stfrancis.org.uk/chaptertwo).

[https://www.instagram.com/chaptertwo\\_bookshop](https://www.instagram.com/chaptertwo_bookshop)

<https://www.facebook.com/ChapterTwoChesham>

Details of clubs, events and village news, including hall bookings: [www.bellingdon.com](http://www.bellingdon.com)  
Please send comments, questions and ideas for future articles to the Editor at [newsletter@bellingdon.com](mailto:newsletter@bellingdon.com)  
The Editor reserves the right to edit submissions for clarity or length.