

# BELLINGDON & ASHERIDGE

# Community News & Events

## FETE

## SATURDAY 29 JUNE

## SAVE THE DATE

**A GREAT FUN DAY OUT FOR THE WHOLE FAMILY**, including traditional game stalls – coconut shy, lucky dip, splat the rat and more. Plus welly wanging, tug of war, fun dog show and classic car display. And let's not forget the barbecue, bar, ice creams, teas and cakes to keep you going.

**BAKERS**, please drop off your cakes in the hall before 11:30am on the day of the fete.



**RAFFLE** - We have some brilliant prizes:

- \* luxury food hamper
- \* cases of wine
- \* gym membership
- \* books from Waterstones
- \* tickets for a tour of Tring Brewery!
- \* Full Moon Pub £50 voucher

Ticket will be on sale at the fete and when we door knock through the villages for donations in mid-June. Or you can buy them online. Simply scan the QR code above or to go to the raffle website <https://go.eventgroovefundraising.com/feteraffle>.

**DONATIONS WELCOME!** We'll be visiting all houses in the villages during our door-knock in the week beginning Monday 17th June. Items gratefully received include bottles of wine, raffle and tombola prizes, good condition toys, board games and books. More details to follow nearer the time.

**HELPERS** We would love your help on the day - please let us know if you can spare a few hours - email [fete@bellington.com](mailto:fete@bellington.com).

**SILENT AUCTION** A chance to bag some really unusual items:

- \* **ICE SKATES** signed by Torvill & Dean
- \* **TASKMASTER** audience tickets
- \* **FLY FISHING** with tuition & picnic at Latimer

To find out more about any of these prizes and to place a bid (or bids!) please email

[fetesilentauction@gmail.com](mailto:fetesilentauction@gmail.com) The auction is open for bids now and until the winners are announced 4pm at the fete.



## BELLINGDON & ASHERIDGE COMMUNITY ASSOCIATION Annual General Meeting Tuesday 16th July at 8 pm

Everyone welcome. Please join us for refreshments and an update of the last 12 months activities. It's your opportunity to share your thoughts, suggestions and ideas for additional facilities and activities.

### JUNE

Wed 5th Meeting Point Tea & Chat (St John's) 2.30pm

W/e 7-9th & 14-16th Moving Connections (see back page)

Wed 19th Knit & Natter, Craft & Chatter St John's 2.30-4pm

W/e 22-23rd Cycling the Chilterns (see back page)

**Sat 29th Annual Village Fete 12.30-4.30pm at Village Hall & Grounds**

Sun 30th Dalmatian Dog Show

### JULY

Wed 3rd Meeting Point Tea & Chat (St John's) 2.30pm

Sat 6th CVGS Plant Sale Methodist Church 2.30-4.30pm

**Fri 12th Community Pub Night at the Village Hall 6.30-10pm**

**Tues 16th BACA AGM at Village Hall 8pm**

Wed 17th Knit & Natter, Craft & Chatter St John's 2.30-4pm

### AUGUST

Wed 7th Meeting Point Tea & Chat (St John's) 2.30pm

Wed 21st Knit & Natter, Craft & Chatter St John's 2.30-4pm

Sat 31st History & Culture Club at St John's 11.30am

### EDITOR'S Note

Reading is shown to lower blood pressure, heart & stress by as much as 68%. That's higher than walking and you can do it when it's raining! Aids a good night's sleep, delays dementia by as much as 5 years & improves memory. Reading is so beneficial there is even talk of prescribing books on the NHS—whatever next, libraries?! So it's very exciting that local resident, Christopher Wood offered to provide a new column, *The Village Bookmark* (back page). Let me know what you think. [newsletter@bellington.com](mailto:newsletter@bellington.com)

### SEPTEMBER

Wed 4th Meeting Point Tea & Chat (St John's) 2.30pm

Sat 7th CVGS Autumn Show Village Hall 3-4.30pm

Wed 18th Knit & Natter, Craft & Chatter St John's 2.30-4pm

### YOU COULD SAVE A LIFE.....

..... just by knowing where your nearest defibrillator is. A public defibrillator is in the porch of the Bellingdon Village Hall.

It is accessible 24x7 and does not need a code to unlock it – just unclip the front cover and lift the defibrillator out.

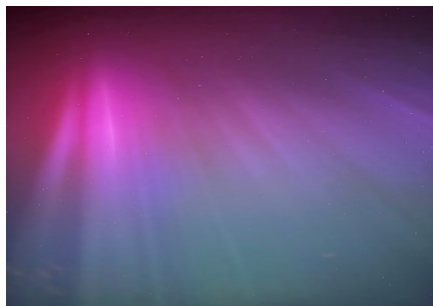
The access is down the drive from the road, there is a large car park and if the barrier is closed there is a parking space in front of it.

**What3Words: ///head.zapped.diverged**

**Postcode: HP5 2XU** – this relates to a number of properties, but the village hall is clearly sign posted in both directions.



### AURORA BELLINGDON



### REWILDING PROJECT

The five new trees are doing really well and blooming. The cowslips, grape hyacinth, daffodils and tulips all bloomed providing splashes of colour & essential early pollinator food. The bug hotel is completed and a second one will be built by the Scouts in July. A bee scrape and bank were built creating areas for solitary and mining bees to nest. Drought tolerant plants have been added to the grass verges either side of the entrance to the hall. More plants will now emerge by the edge of the football fields, thanks to the stop in mowing - naturally occurring wildflowers such as stitchwort, poppy, celandine and red campion and wild garlic.

I will continue to add more planting which will naturally multiply creating new environment for wildlife. Many thanks to all the volunteers, the Scouts, Alf for making this happen and the grant from the Chiltern Society.

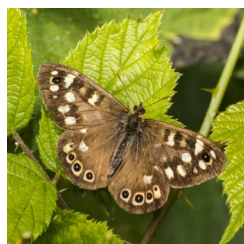
**Antonia Savvides**

### WHAT'S BEEN HAPPENING AT CAPTAINS WOOD?

The Chiltern Society has been caring for Captains Wood Local Nature Reserve for 10 years. With its towering beech trees, dappled glades and iconic views across the surrounding countryside, it is a hugely popular place. As a local conservation charity, we are committed to caring for the reserve to ensure it is a healthy, robust and diverse woodland that can be enjoyed long into the future, improve biodiversity, and even helps tackle the growing climate crisis.

A recent example of this, is some work we planned with the Forestry Commission last winter which was focussed on managing ash dieback and thinning the canopy. Thinning cover helps to diversify the structure of a woodland particularly where the trees are largely single species of an even age, like Captain's Wood. It allows more light to reach the woodland floor, helping smaller shrubs, flowers and new

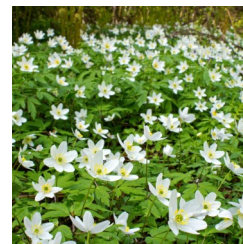
trees. This in turn provides more habitat for a diverse range of other species such as invertebrates and birds, including great spotted woodpecker and tawny owls. Where possible, the trees selected for removal were ones that are a safety concern or diseased/dying. The winter months are the best time for this type of work as it has less chance of disturbing wildlife. We have also done some replanting to encourage new species to colonise, but the natural regeneration in Captain's Wood is good, so we would expect a diversity of new species to



naturally grow given the right conditions. A more diverse woodland will also be much more resilient to climate change in the future.

Ash dieback is a disease that is affecting most of our ash trees in the UK, and – unmanaged - could have a devastating impact on the Chilterns

landscape as we know it. Once a tree has ash dieback it will deteriorate quickly becoming brittle and prone to collapse and ultimately death. To manage the disease, the ash trees need to be removed, particularly from high risk areas such as path edges, roads and properties. In remote areas of a woodland, then they are left in the hope that there is some natural resistance to the disease in the existing population. This work can look dramatic as large forestry equipment is used, but with almost 60 years' experience of caring for nature in the Chilterns, we are confident that the woodland will recover quickly and will be healthier in the long term.



You can find out more about our work on our website or by following us on Social.

**Gavin Johnson, Head of Conservation, Chiltern Society**

## ST. JOHN'S CHURCH

The flowers in St. John's looked beautiful at Easter. We always have a display of lilies donated by people in the congregation in memory of loved ones who are no longer with us. Together with spring flowers looked and smelt lovely as we celebrated. We continue to meet every week for a service at 10 am.

You will probably have seen our new external church noticeboard where information about our services and other activities will be displayed. As always, we would love to welcome you to any or all of these events and services.

**Jane Edmunds**

## SHORT MAT BOWLS CLUB

Our club won the South Bucks League ending in March. We also played in the Single Mat League and came 4th with Widmer End winning the league.

From the beginning of May, we start in the Summer League with a home game against Chinnor (our main rivals). The club welcomes anybody to come and have a look at a session in the Village Hall.

**Don Baker**

**Bellingdon & Asheridge  
Village Hall**

**Monday 7.30 pm  
Wednesday 10.00 am**

## MEMORIES OF BERRY GIDMAN

Berry was born in Rawtenstall, Lancashire on July 24th 1945 so her birthday was 24/7 (all day everyday) & lived in Accrington until leaving to go to Manchester College of Art & Design from 1963 to 67 where she achieved an honours. The following year was spent at the West of England College of Art where she gained her Art Teacher's Diploma.

She had no problem getting teaching appointment offers & chose Beaconsfield Girls High School where she spent her first 5 years as an assistant art teacher. Then she chose a similar role at Durrants Secondary Modern in Croxley Green and after another 5 years she became of Head of Art & Ceramics at St Clement Dane's in Chorleywood where she spent the next 15 years. A further 4 years was spent at Berkhamsted Collegiate for Boys as Teacher of Art & Ceramics. This was followed on retirement by 11 years as an Art Tutor for adults with Bucks Continuing Education.

Berry was herself an extremely proficient painter & ceramicist. Her teaching has spanned around 55 years. Inspiring many to see how they could produce a piece of artwork that they never imagined



was possible. Even in October last year she was still guiding a small group in Amersham who were so keen for her to keep giving them her continued input. She also held an Art Class in Bellingdon Village Hall for over 20 years.

There are countless examples of how she encouraged & developed whatever talent anyone may have had (hidden or otherwise). But one example that her husband, Paul recalled is indicative of her passion for not just art but also teaching.

A pupil at Durrant's school was dyslexic - none of the teachers could manage him. Berry encouraged and developed his latent talent for art. It later transpired that he got a job as an animator in California.

Berry & Paul loved going to places off the beaten track on holidays - particularly Greece & the Caribbean. She loved dancing (often on her own as Paul was not so

keen), reading books, swimming, going on walks with Paul in the countryside every day, ice skating, roller skating & pink carnations. A valued and long-time member of our community, she will be sadly missed. Two of her paintings are to be hung in the Village Hall. The photo shows Berry with dolls that she made including their ceramic faces.

## CHESHAM VALE GARDENERS' SOCIETY

Plant Sale	Saturday 11th May 2.30 to 4.30pm
Plant Sale	Saturday 18th May 9.30am to noon
Summer Show	Saturday 6th July 2.30 to 4pm
Coach Outing	Saturday 13th July
Autumn Show	Saturday 7th September 3 to 4.30pm
October Social	Friday 11th October 7pm till late
	Theme: 1950s American Diner

Bellingdon & Asheridge Village Hall  
Market Square, Chesham  
Methodist Church, Bellingdon.  
To Wrest Park

Bellingdon & Asheridge Village Hall.  
Bellingdon & Asheridge Village Hall.

**Adrian Norris, Chairman**



## HISTORY & CULTURE CLUB

At the last meeting we were transported overland from Bellingdon to the Sahara Desert, dipping into various cultures. Our next meeting is on **August 31<sup>st</sup> at 11.30 am in St. John's** and will be a participatory one in which we are asking people to bring a piece

of music they like and talk about why for a few minutes. If you would like to talk about something linked to history or culture at one of these meetings - for between 5 minutes and an hour - do let us know!  
[j.edmunds@sky.com](mailto:j.edmunds@sky.com)



# CHARTRIDGE PARISH COUNCIL

## Footpath Gates

The Parish Council identified various locations to replace footpath stiles to improve accessibility and safety. Despite our best efforts we've not been able to persuade the relevant landowners to accept the donation. So we would like to receive suggestions from the community for where they see the need for new footpath gates.

Contact:  
[clerk@chartridgeparishcouncil.org.uk](mailto:clerk@chartridgeparishcouncil.org.uk)

## Blue Ball Public House

The Parish Council have been supporting the application and appeal for the pub to continue to site a mobile home to accommodate catering staff which will help it continue to be viable. Unfortunately, the appeal has recently been refused. We encourage local residents to continue to support what is now the only pub in the

whole Chartridge Parish by visiting for excellent quality and very good value food and drinks & enjoy the lively atmosphere while we see what next steps can be taken.

## Bellingdon Road Safety

Some of you will be aware that we have been trying to get the landowners along the Bellingdon "chicane" to cut back their hedges for the past 18 months as they present an increasing safety hazard for all road users especially pedestrians. All our efforts have been ignored, so this has now been referred to Bucks County Highways enforcement team who if their letters are ignored will escalate this further towards legal action.

## Community Speed Watch

Our winter appeal for Community Speed Watch volunteers yielded just one excellent

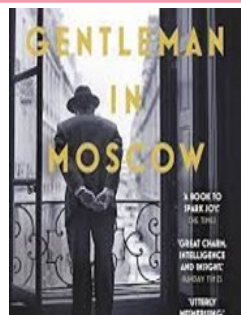
volunteer to join our other operators. Several other people expressed interest, but fell off the radar after being contacted and learning that there is a small amount of simple online training. It's rather like 'Watch with Mother' but with police officers instead of teddies. We are **desperate** for more operators. We are beginning to detect a fall in the average speeds though the high extremes remain horrifying - our recently installed sign by Bloomfield Cottages has recorded over 60% exceeding the 30mph speed limit, a significant number over 60mph and a few at speeds of over 70mph! If we don't have more volunteers our Community Speedwatch project may well fall apart, just when we start to notice its effect. This concerns each one of us and our families; even an hour a week would help. We hope to hear from you. Contact: [joan.lherbier@chartridgeparishcouncil.org](mailto:joan.lherbier@chartridgeparishcouncil.org)

CLlr Tim Corvin

# THE VILLAGE BOOK MARK

## Non-Fiction 192 pages by Bent Flyvbjerg & Dan Gardner.

Thankfully, this does not read like a piece of academic research, instead it assumes I am a small child – its references Lego, and is the better for it. Discover why the Olympic Games is so problematic every four years, why the building of Heathrow T5 was so successful, why HS2 had archaeologists on a retainer (and no doubt speed dial), why the Sydney Opera House was such a nightmare, but the Bilbao Guggenheim was a dream. All of this and more in a book littered with bite size architectural errors and astounding feats. Flyvbjerg's many years of collecting unique data offers a one-off perspective. It is a clever insight & a quick read.



**Fiction 378 pages by Mor Towles.** If you like your fiction smattered with a bit of history, especially Russian, then this is for you. Starting in Moscow in the 1920's, Count Rostov is under house arrest by a Bolshevik tribunal (the comedy is not lost on the Count) for being an unashamed monarchist, he has too many friends in high places to be executed. His sentence

is to be placed under house arrest, thus becoming the Hotel Metropol's permanent guest. But he is so much more than that. Full of wonderful characters and vignettes, drama, comedy and tragedy, it is a Russian doll revealing so many treats within. When it is safe to return to Russia, I am booking a suite at the Metropol.

Christopher Wood MBE

## CHILTERN CYCLING SPORTIF

Two days of cycling from the Chiltern Velo Café. Overnight camping facilities at Bellingdon with entertainment, bar & catering for participants.

[www.atwevents.co.uk](http://www.atwevents.co.uk)

## MOVING CONNECTION CAMP

Dancing, Contact Improvisation, Saunas & Camping in Nature  
Weekend 1: June 7-9<sup>th</sup>  
Weekend 2: June 14-16<sup>th</sup>

Details of clubs, events and village news including hall bookings go to [www.bellingdon.com](http://www.bellingdon.com)  
Please send comments, questions and ideas for articles to the editor at [newsletter@bellingdon.com](mailto:newsletter@bellingdon.com)  
The editor reserves the right to edit submissions for clarity and length.